

HET ZWIN

TUIN VAN EDEN & VECHTEN TEGEN DE BIERKAAI

Jan Trachet
Philippe De Smedt
Hans Verbeeck
Lander Baeten



UNIVERSITEIT
GENT



100⁺ FACULTEIT
BIO-INGENIEURSWETENSCHAPPEN



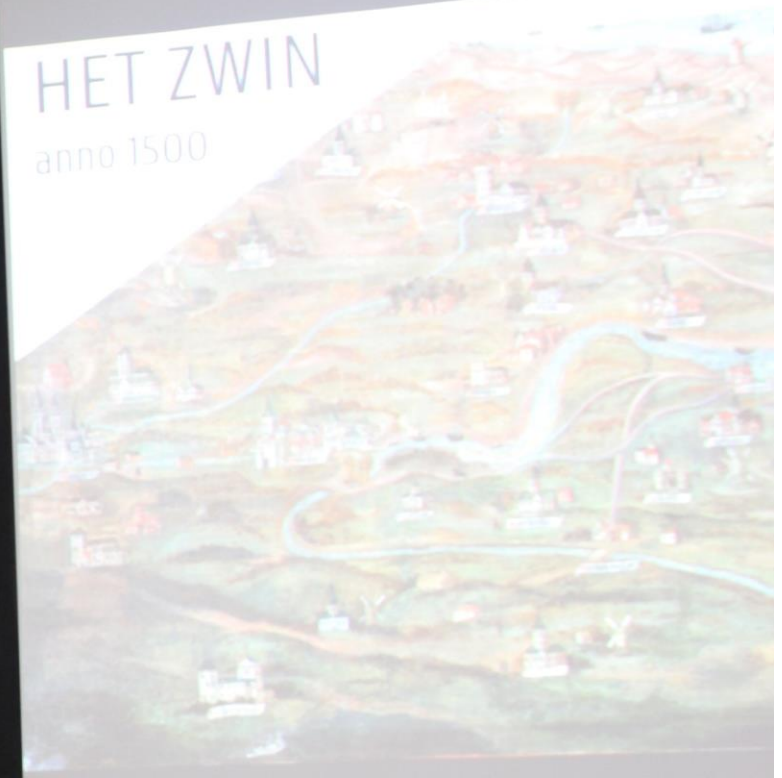






HET ZWIN

anno 1500



HET ZWIN

anno 1500



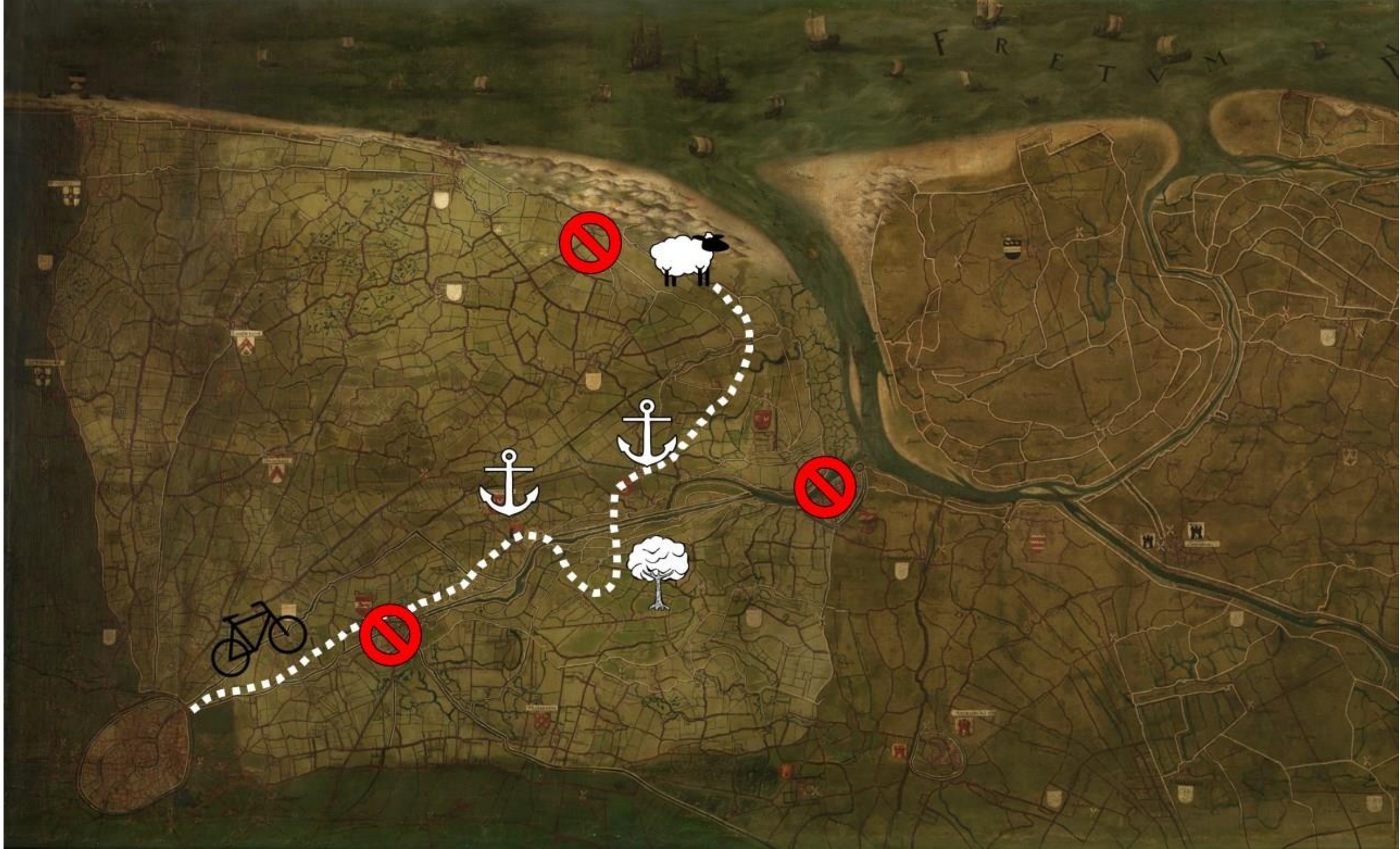
UNIVERSITEIT GENT
Crelan

UNIVERSITEIT GENT

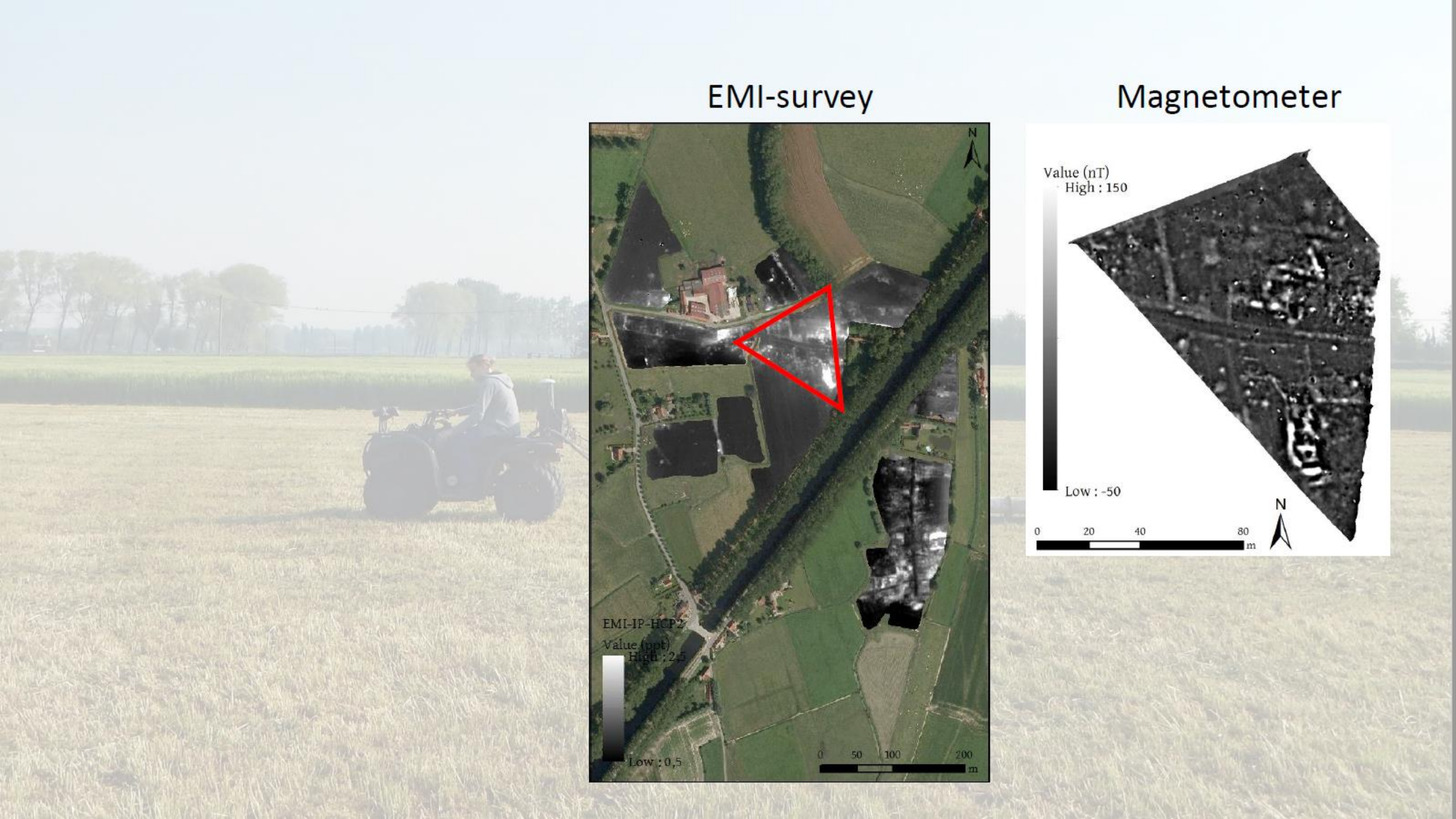
UNIVERSITEIT GENT
Crelan

UNIVERSITEIT GENT
Crelan

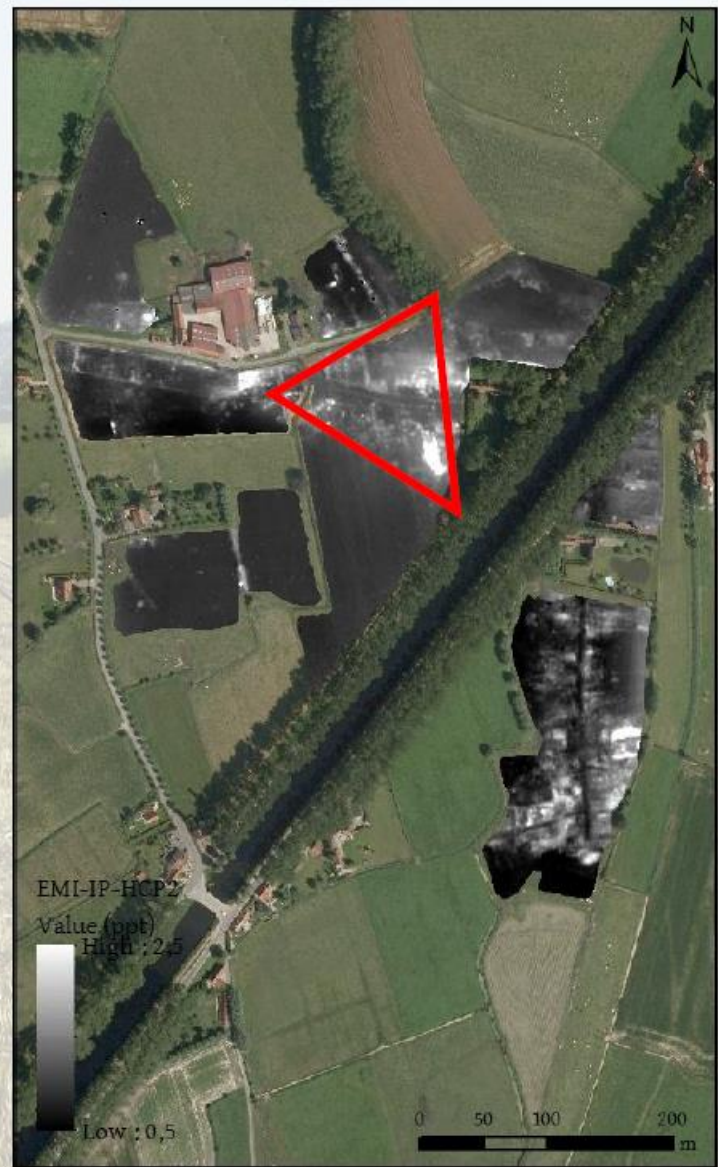




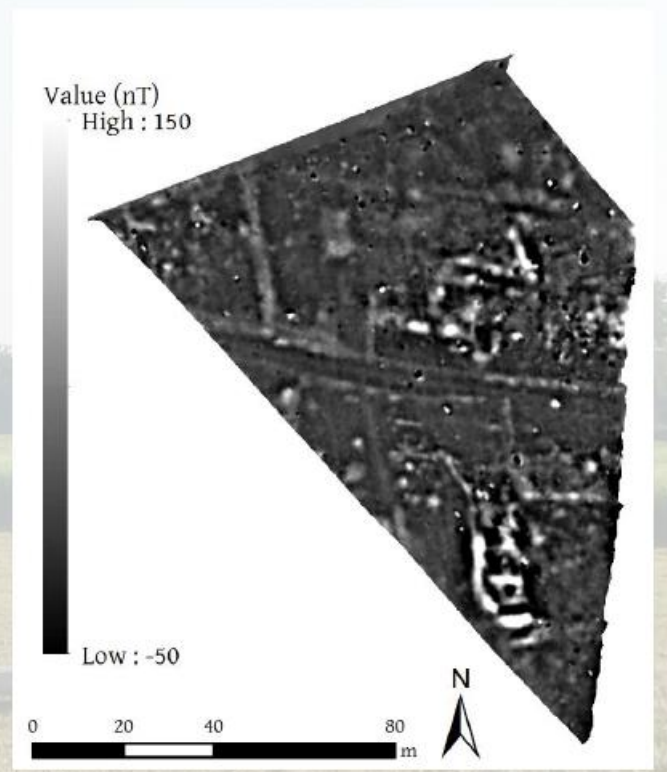




EMI-survey



Magnetometer







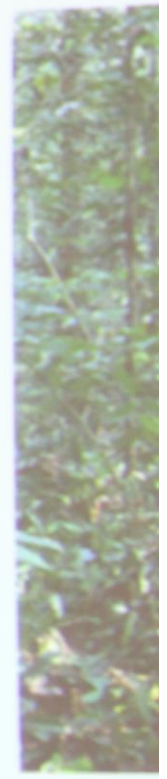
2016



0 25 50 100 m



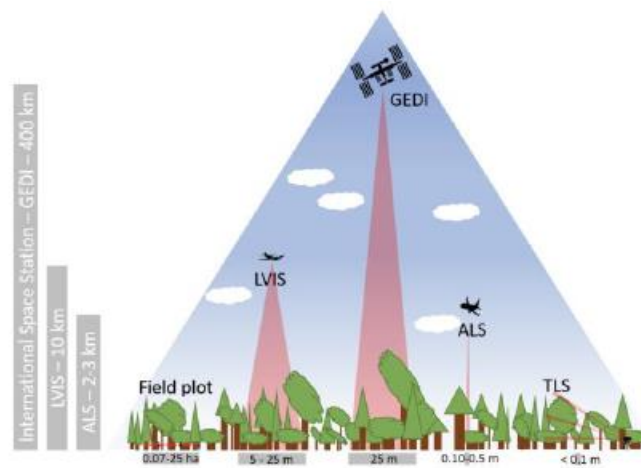
TEIT



30

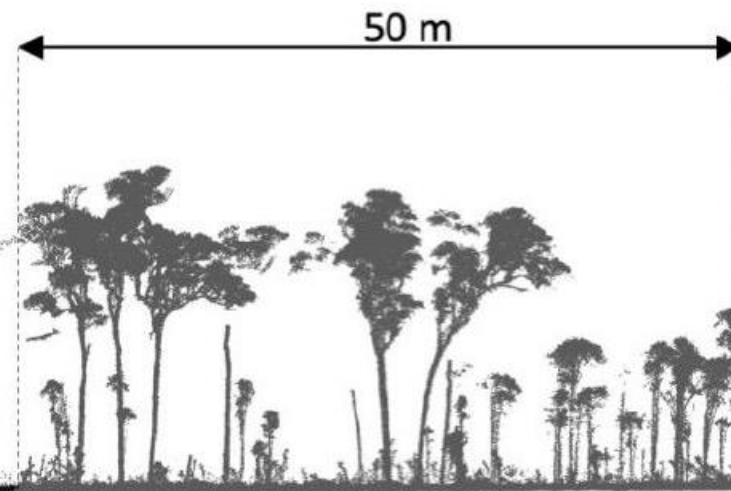
LiDAR op verschillende platformen

- Space borne (uit de ruimte)
- Air borne (vliegtuig)
- UAV (drone)
- Terrestrisch (op de grond)



CAVElab

Computational & Applied
Vegetation Ecology



ALS: RIEGL Q560 (39 pts/m²)

UAV-LS: RIEGL VUX-SYS (1,088 pts/m²)

TLS: RIEGL VZ-400 (12,600 pts/m²)



SITEIT



