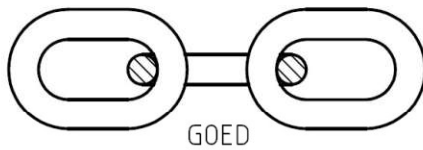
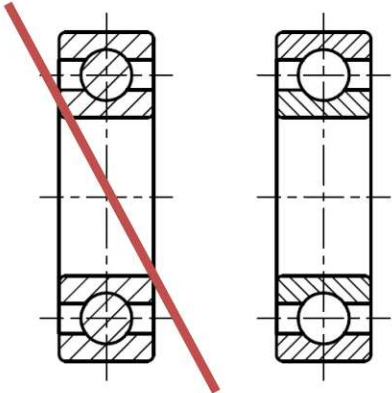
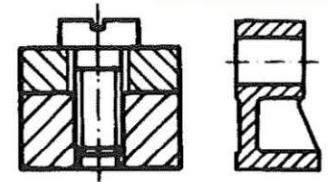


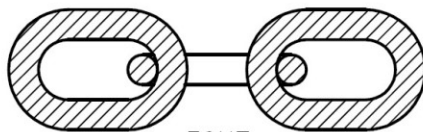
14 Langs en dwarsdoorsneden

- Massieve delen van een werkstuk **NOOIT** volledig in langsdoorsnede

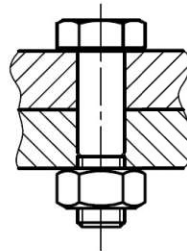
- Bepaalde elementen zoals bouten, stiften, assen, kogels en schroeven of delen van elementen worden **niet doorgesneden**, wanneer ze in de tekening in hun langsrichting voorgesteld worden en geen holle ruimtes vertonen.
- Delen van een element die boven de basisvorm uitsteken, worden **evenmin doorgesneden**.
Bv.: steunribben, spaken, verbindingstukken.



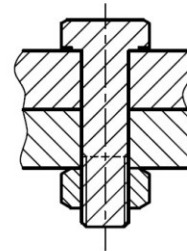
GOED



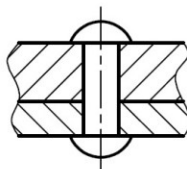
FOUT



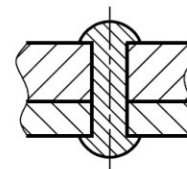
GOED



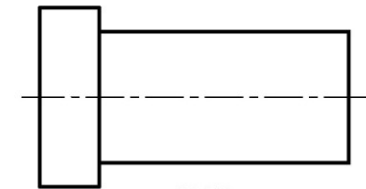
FOUT



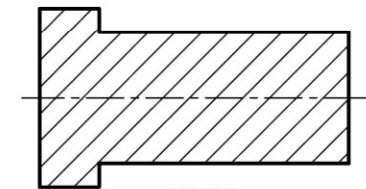
GOED



FOUT



GOED

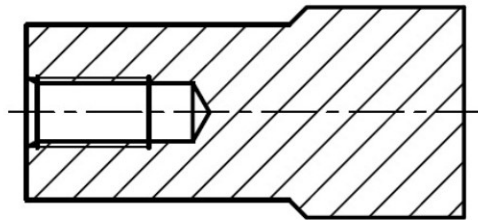


FOUT

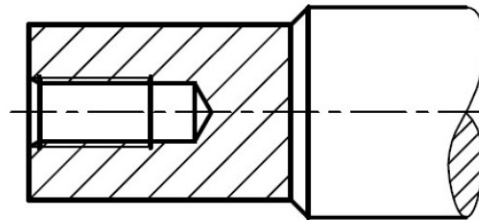
Massief: Cylindrische delen (assen, stiften...), kogels, spaken, versterkingsribben, bouten, moeren, sluitringen, klinknagels, kettingschakels, spieën,...

14 Langs en dwarsdoorsneden

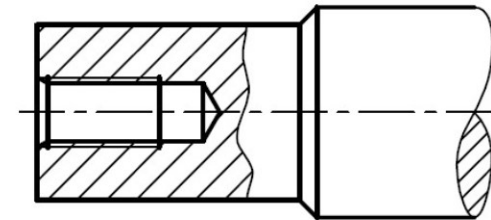
- Plaatselijke doorsnede



FOUT



FOUT



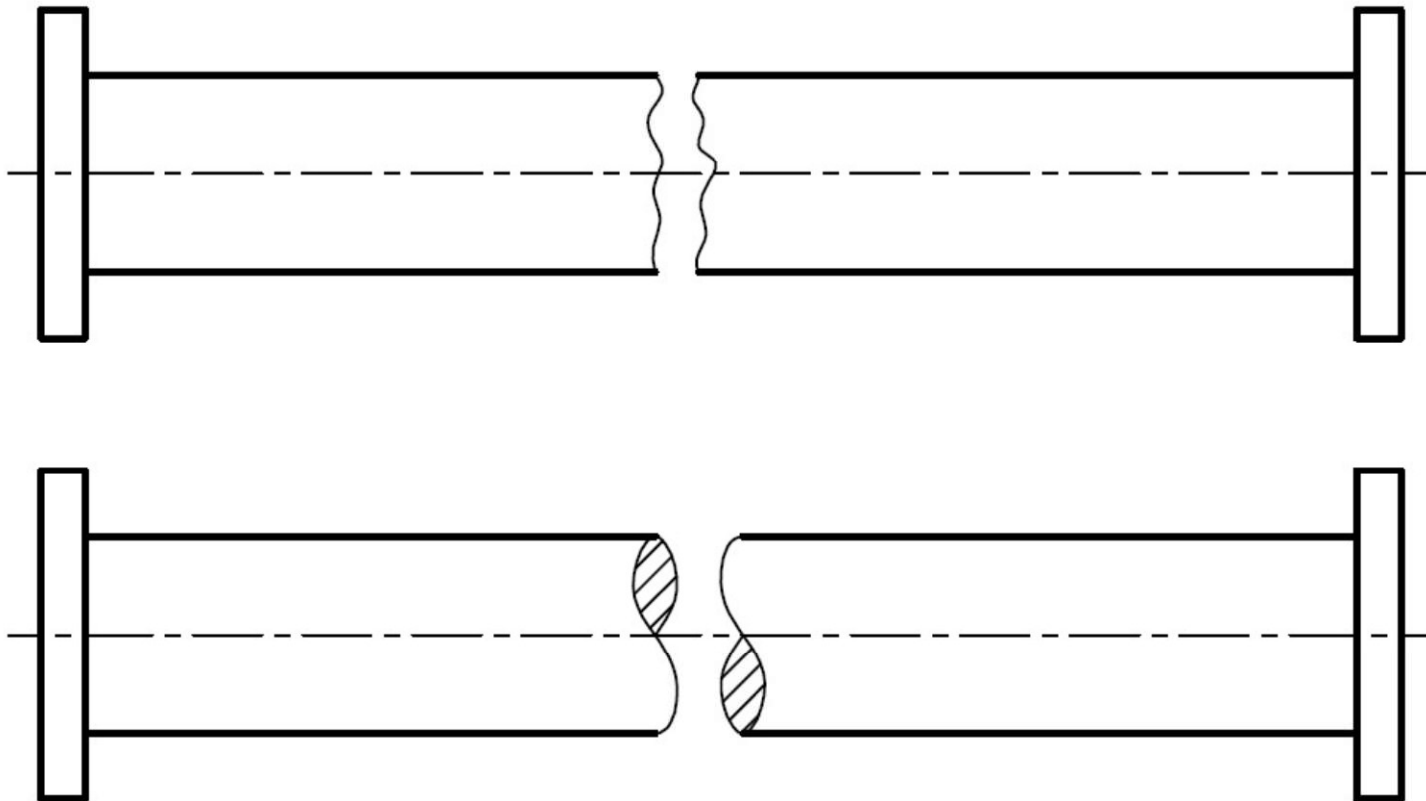
GOED

Dus wel onvolledig indien nodig !

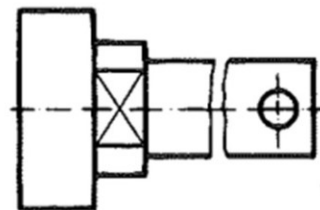
- Massieve delen van een werkstuk **NOOIT** volledig in langsdoorsnede

14 Langs en dwarsdoorsneden

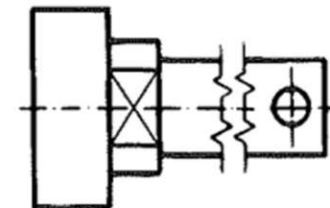
- Onderbreking



- Delen mogen **afgebroken** of **onderbroken** getekend worden. De breuklijnen gelden voor rond en vlakke delen.

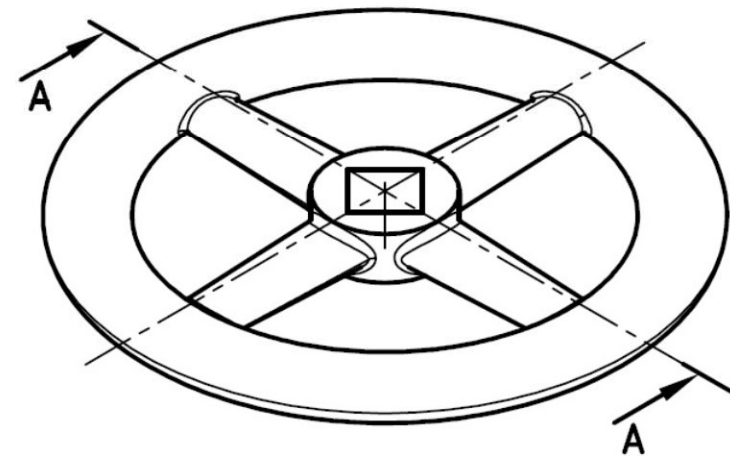
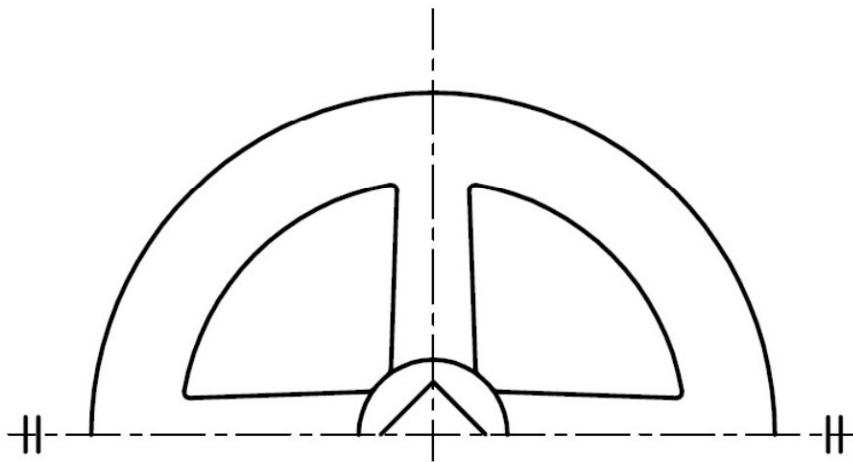
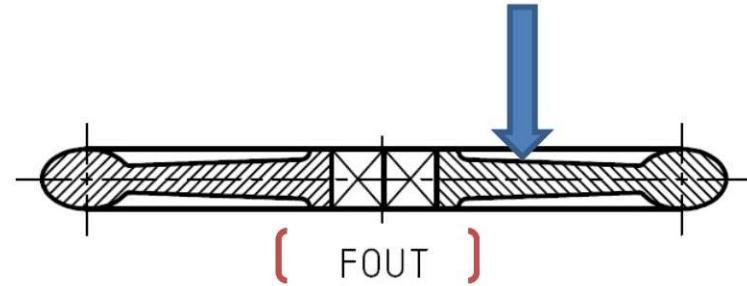
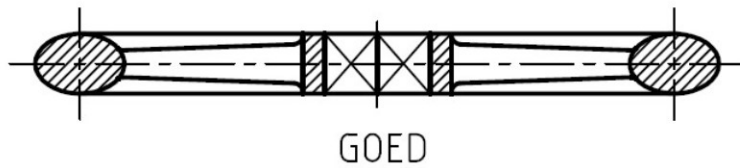


of



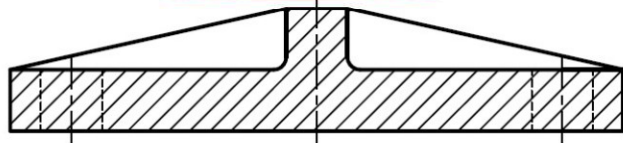
14 Langs en dwarsdoorsneden

- spaken

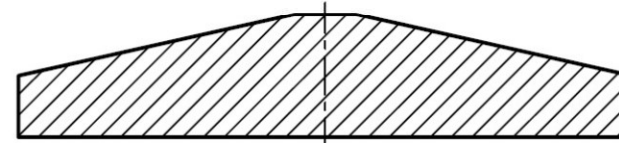


14 Langs en dwarsdoorsneden

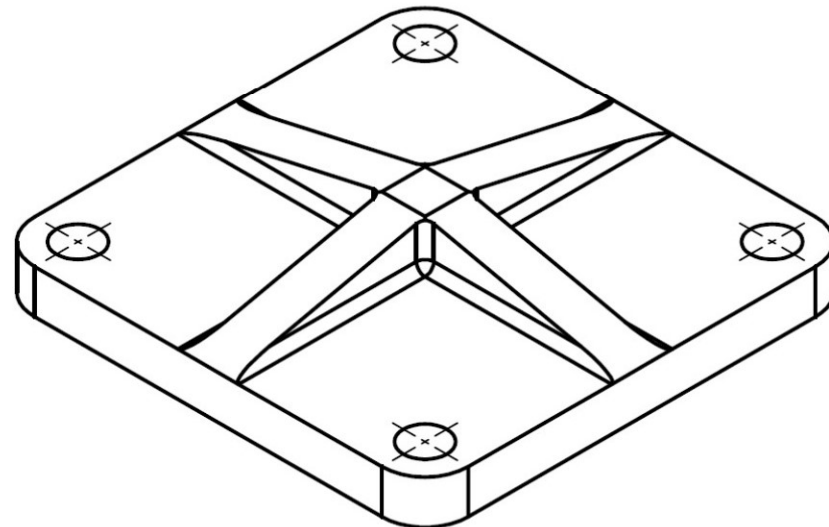
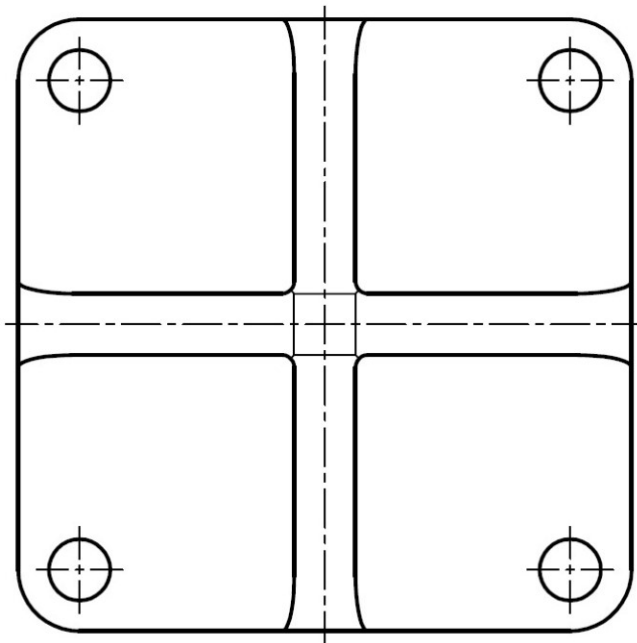
- Versterkingsribben
 - Massieve delen van een werkstuk **NOOIT** volledig in **langsdoorsnede** ← Dus wel in dwarsrichting !



GOED

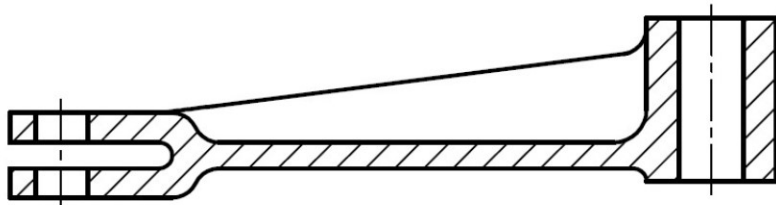


FOUT

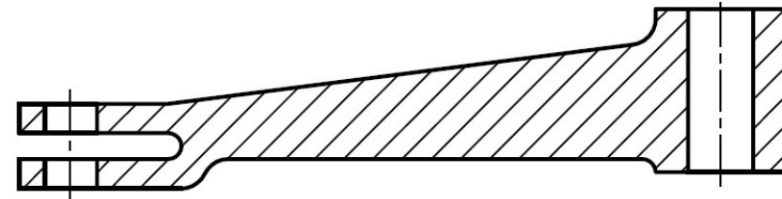


14 Langs en dwarsdoorsneden

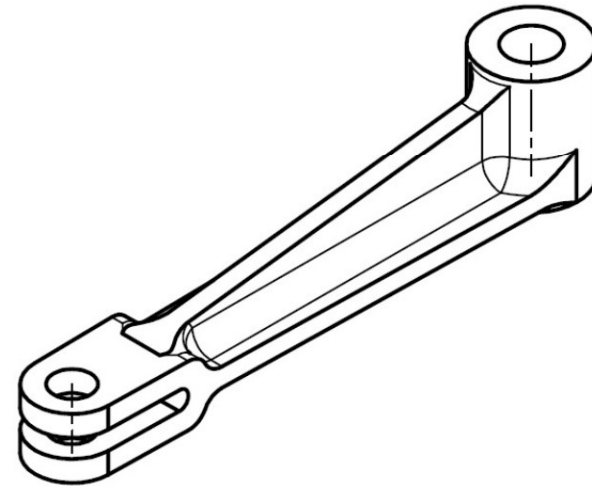
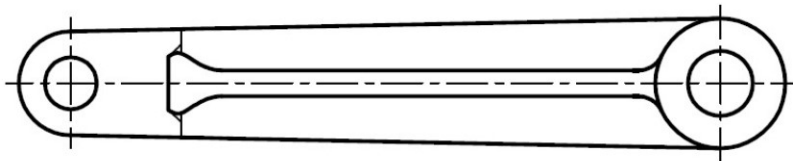
- Versterkingsribben



GOED

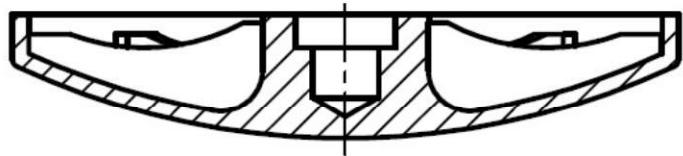


FOUT

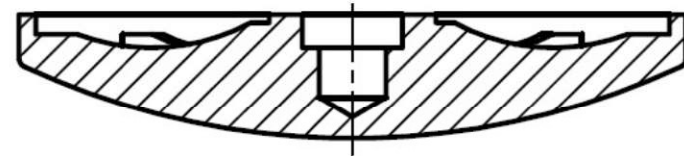


14 Langs en dwarsdoorsneden

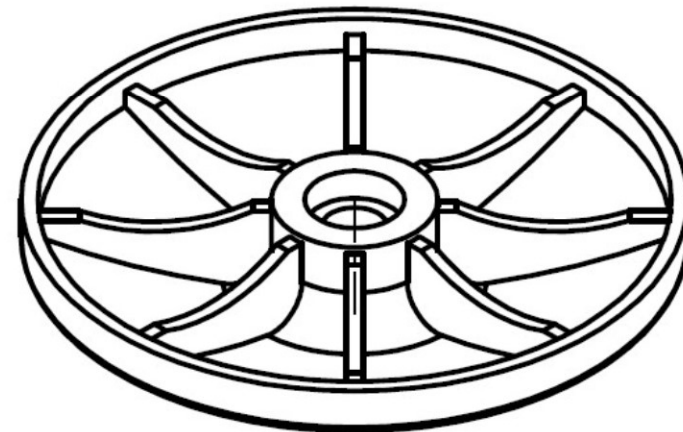
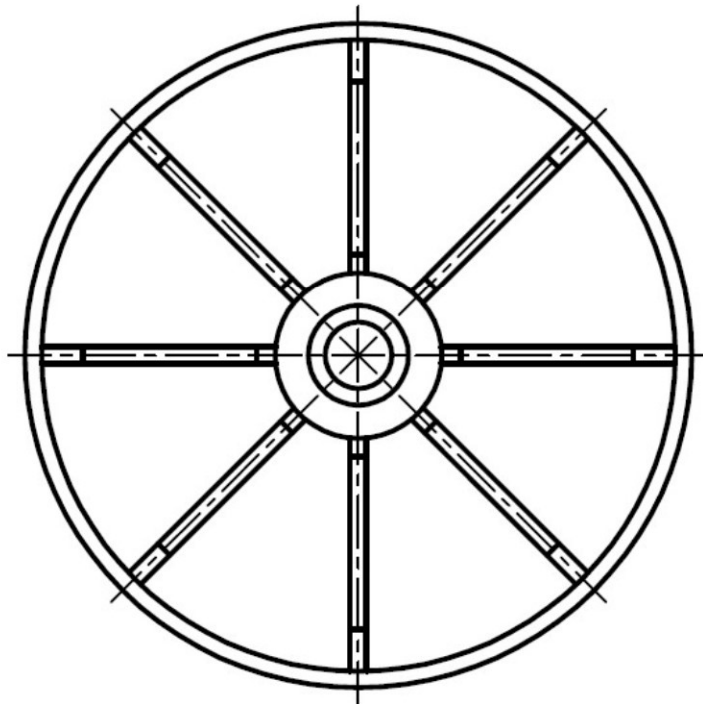
- Versterkingsribben



GOED

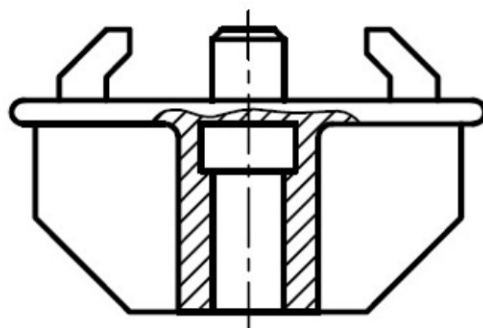
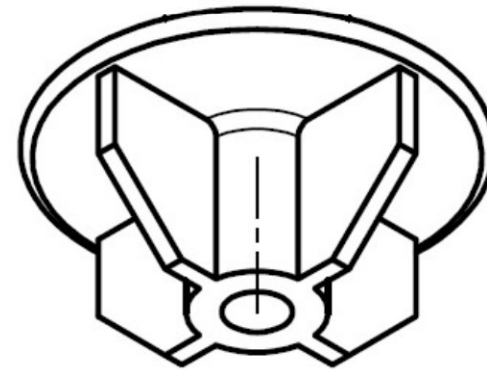
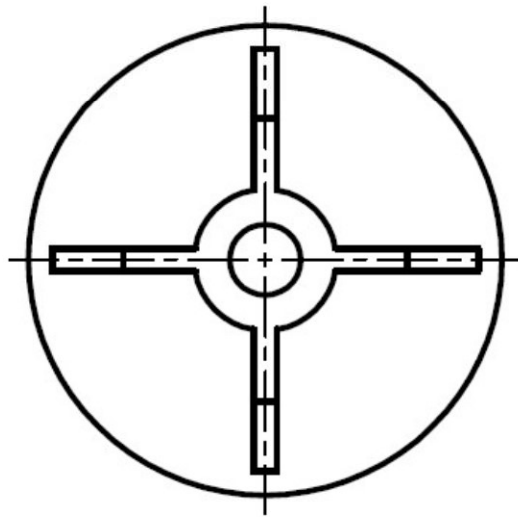


FOUT

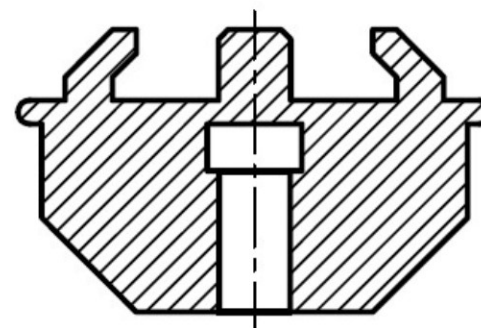


14 Langs en dwarsdoorsneden

- Versterkingsribben



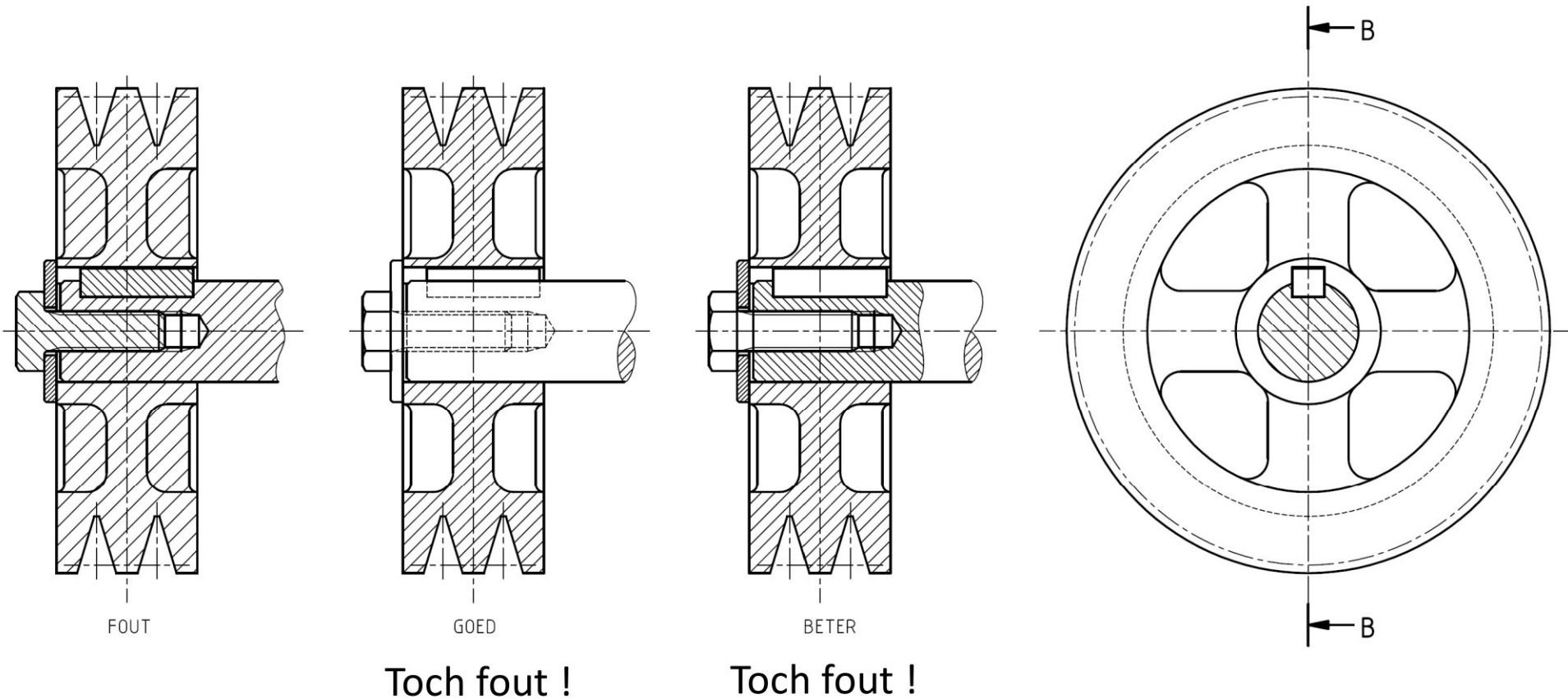
GOED



FOUT

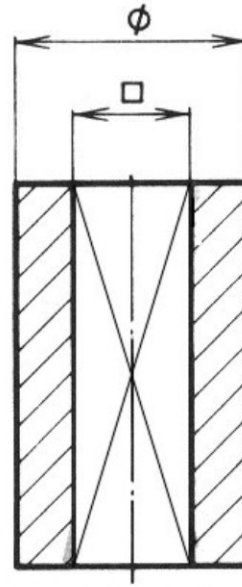
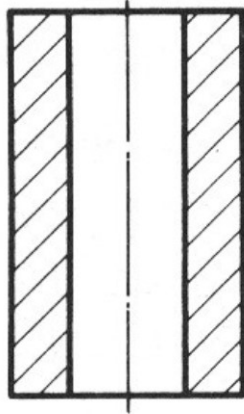
14 Langs en dwarsdoorsneden

- Spieën = massief



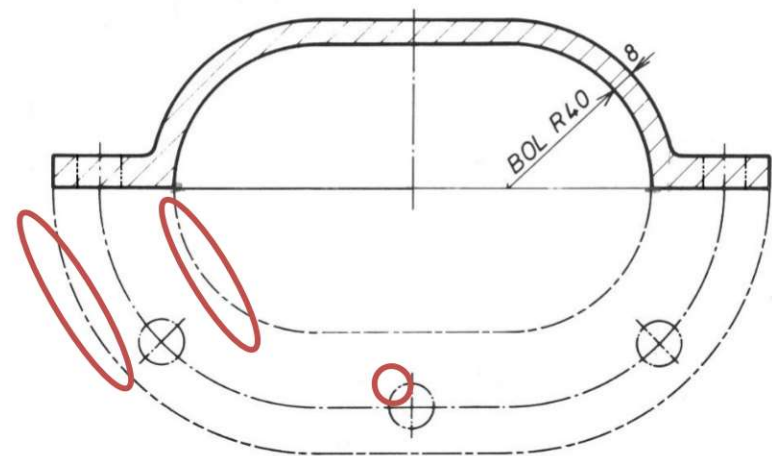
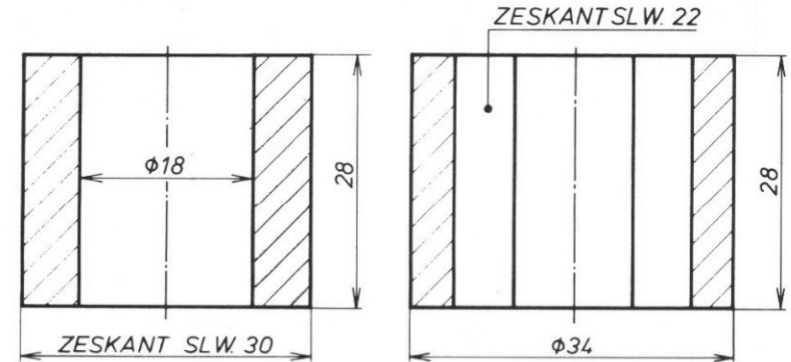
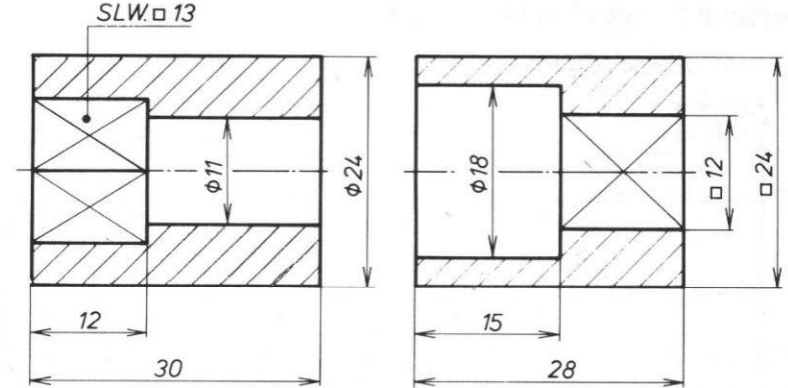
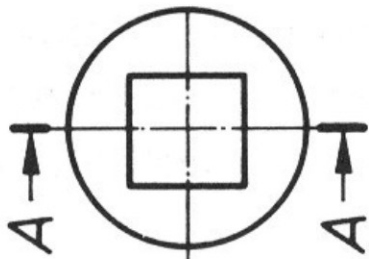
15 Beperking van doorsneden

DOORSNEDE A-A

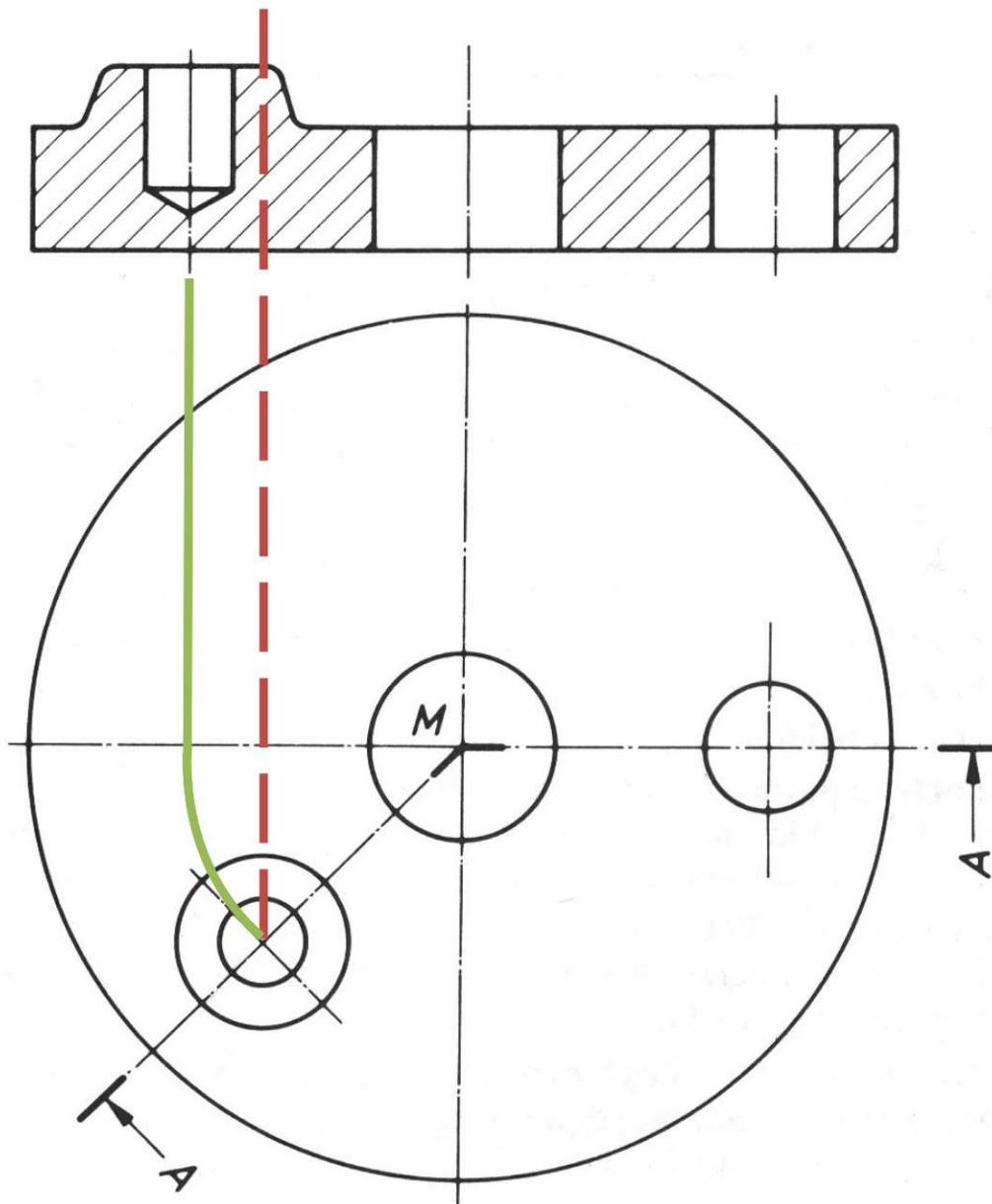


VEREENVOUDIGDE
VOORSTELLING

BOVENAANZICHT



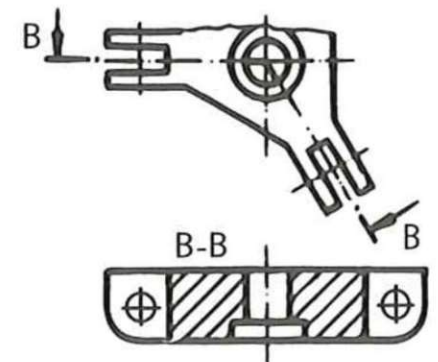
15.2 Gebroken doorsneden



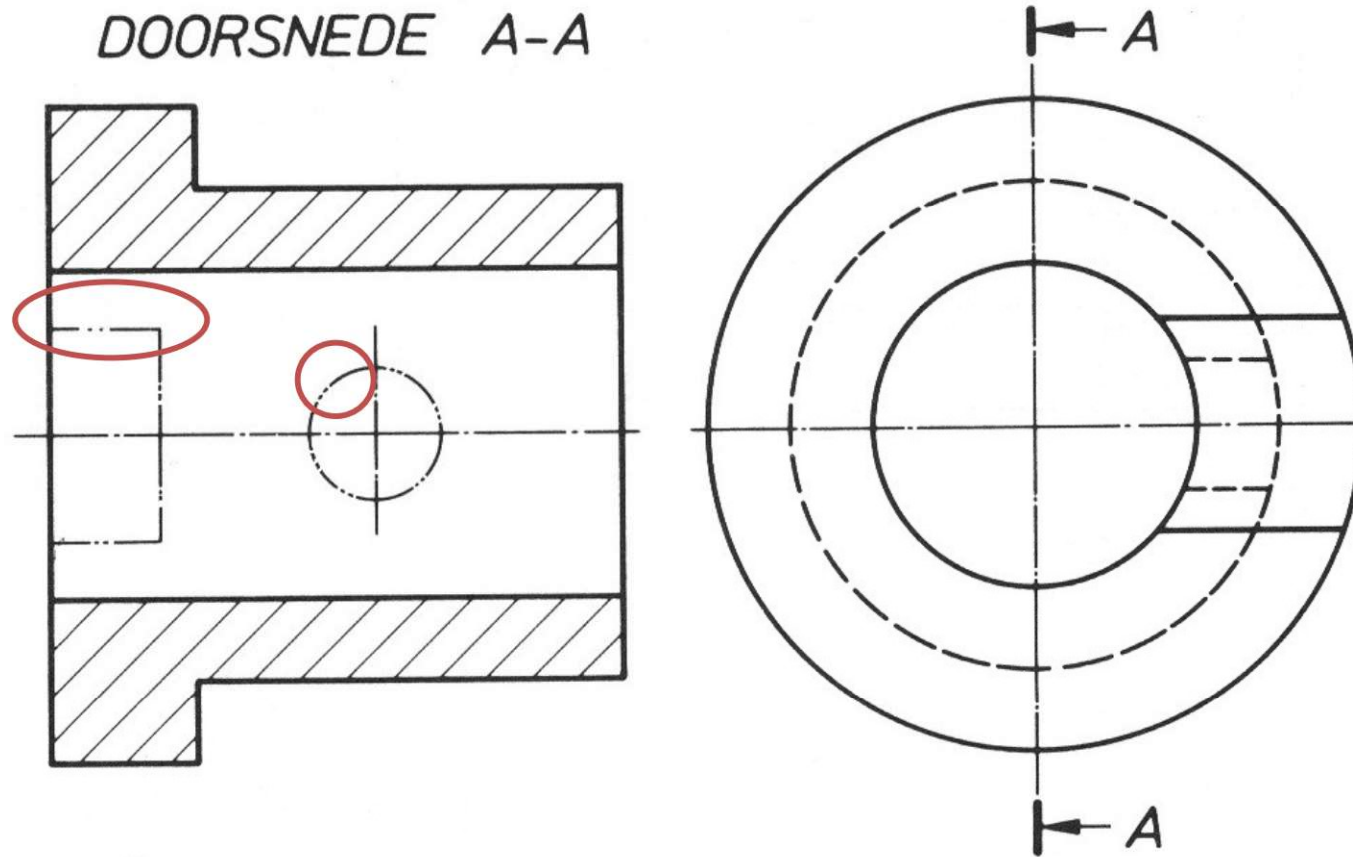
Eerst roteren
Dan pas ophalen !

- Snijvlakken die in een hoek t.o.v. elkaar liggen, worden voorgesteld alsof ze in één vlak liggen.

TABELLENBOEK
p.68
METAALTECHNIEK

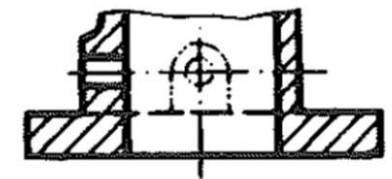


15.3 Delen gelegen voor het snijvlak

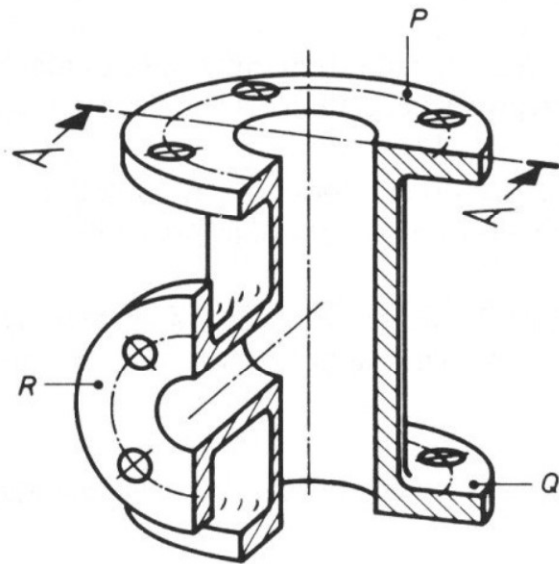


TABELLENBOEK
p.67
METAALTECHNIEK

- Als de voorstelling van delen die zich vóór het snijvlak bevinden **noodzakelijk** is, worden deze getekend in dunne gemengde streeplijn met twee korte streeplijnen. Bevinden de delen zich achter het snijvlak, dan worden ze met een dunne streeplijn getekend.



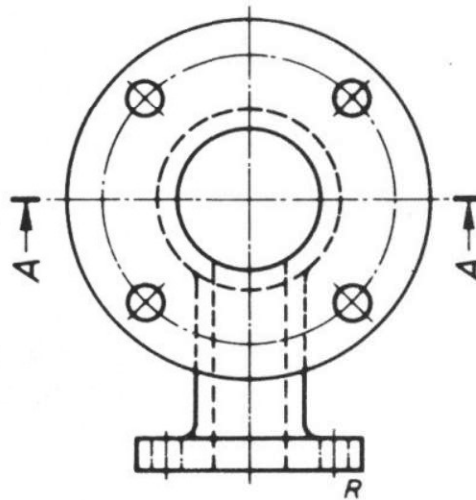
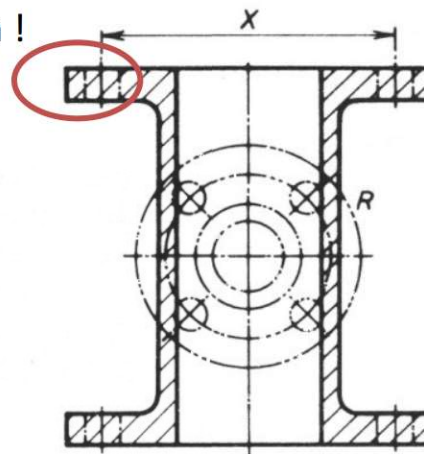
15.3 Delen gelegen voor het snijvlak



Positie
boringen !

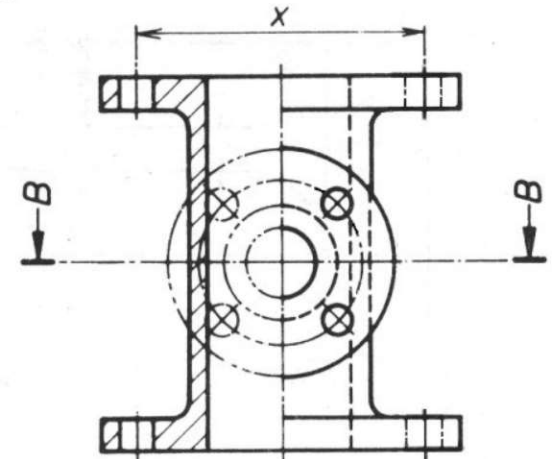
Manier 1

DOORSNEDE A-A

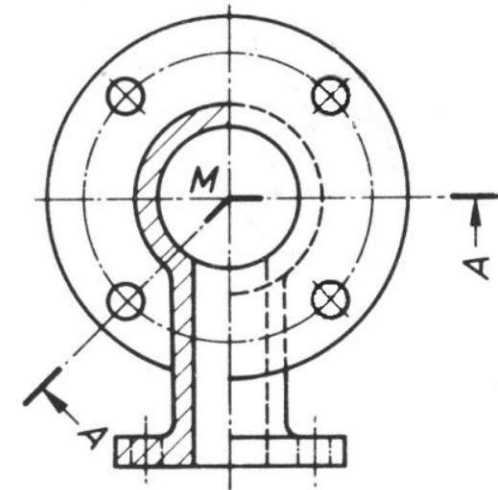


Manier 2

1/2 DOORSNEDE A-A VOORAANZICHT

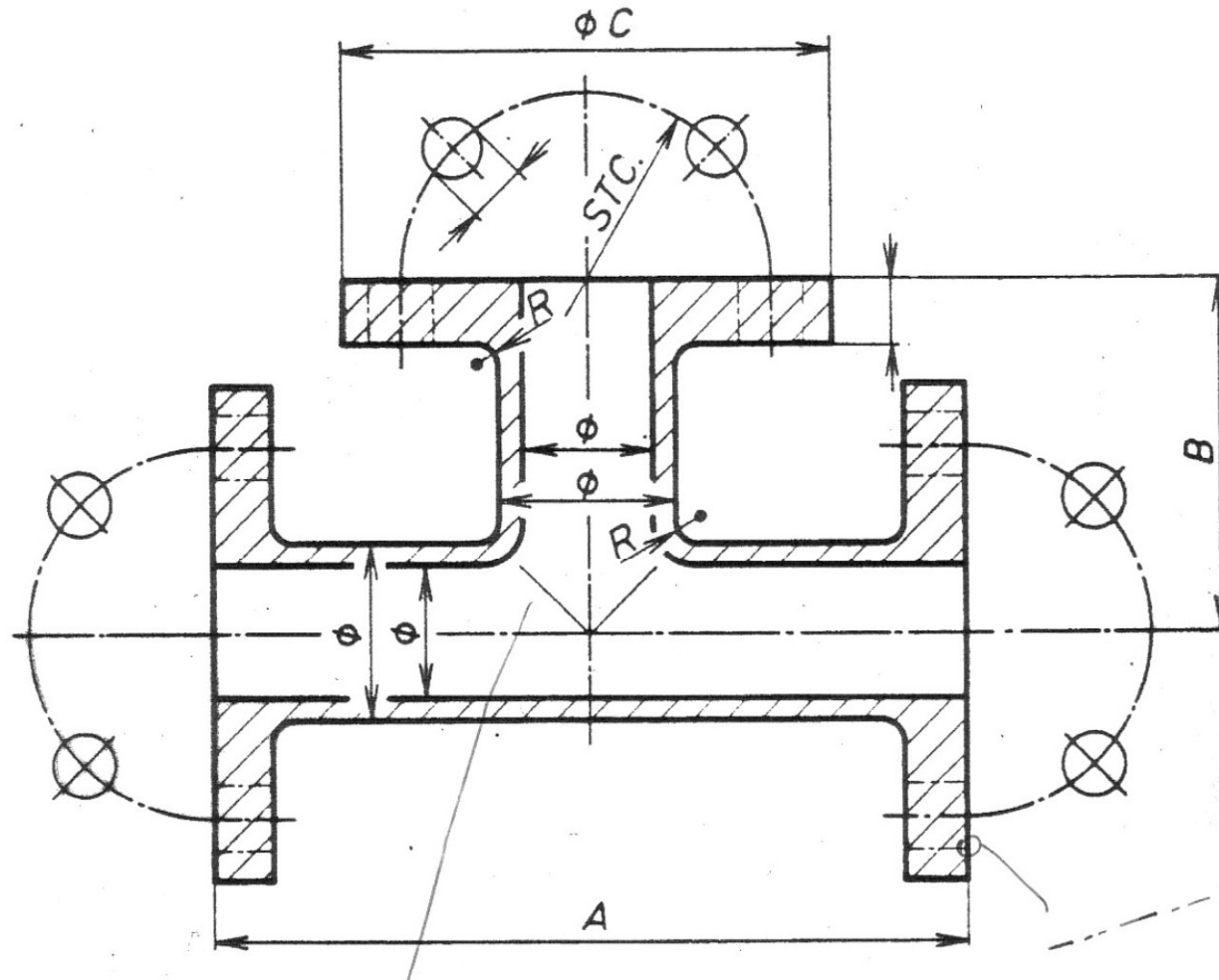


1/2 DOORSNEDE B-B BOVENAANZICHT

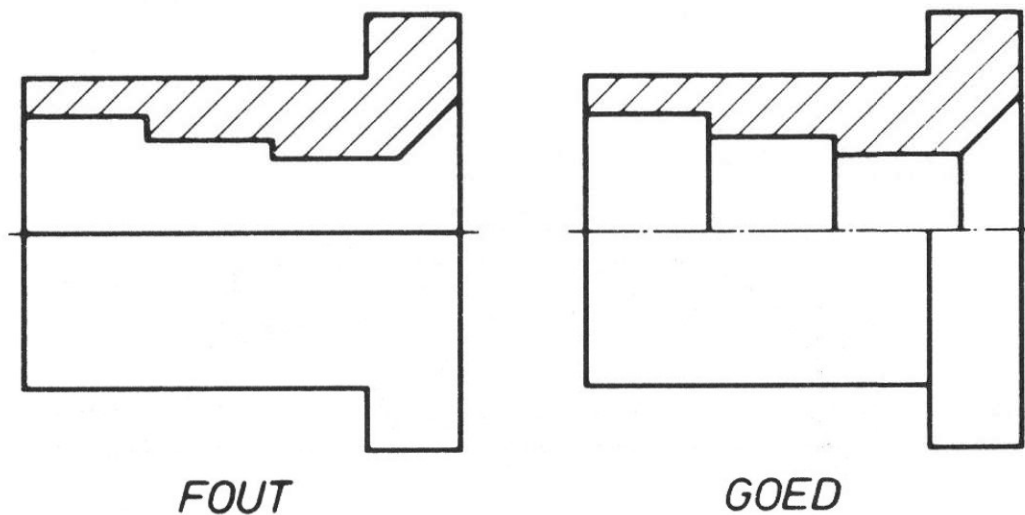


15.3 Delen gelegen voor het snijvlak

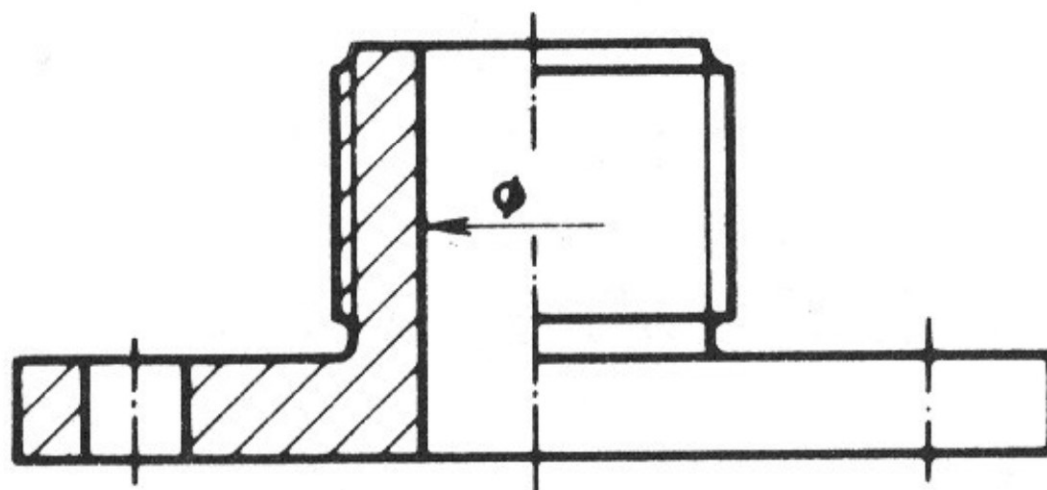
Manier 3



15.4 Halve doorsnede - half zicht



TABELLENBOEK
p.67
METAALTECHNIEK

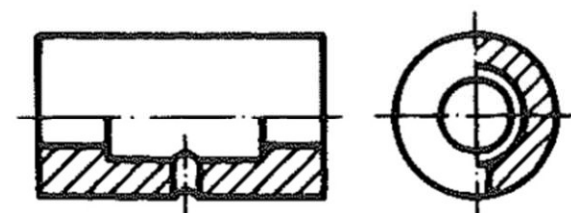


Links doorsnede

-

Rechts aanzicht

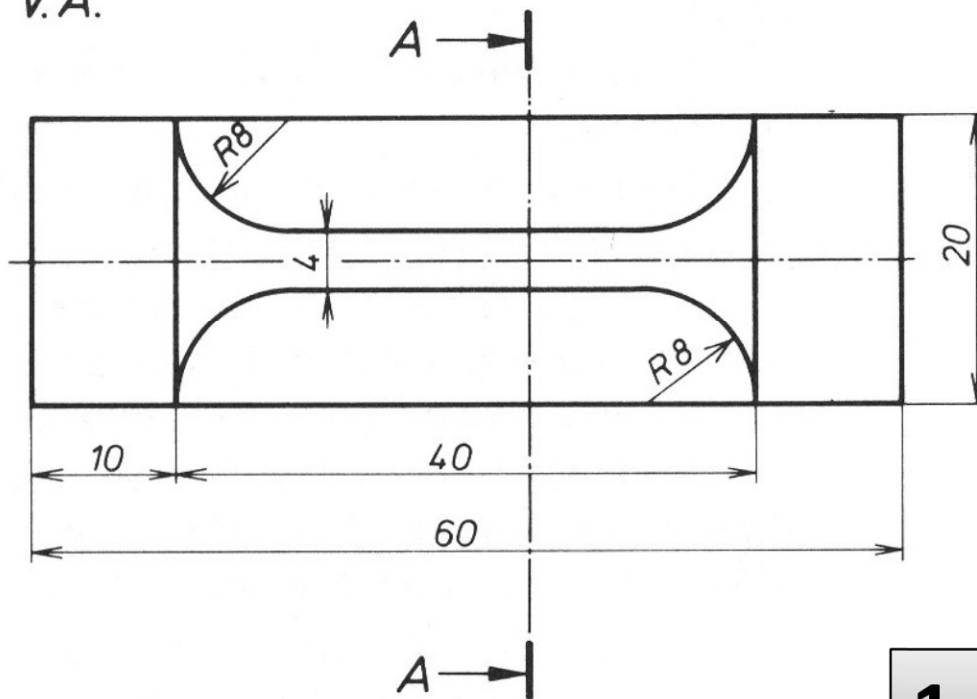
Halve doorsnede



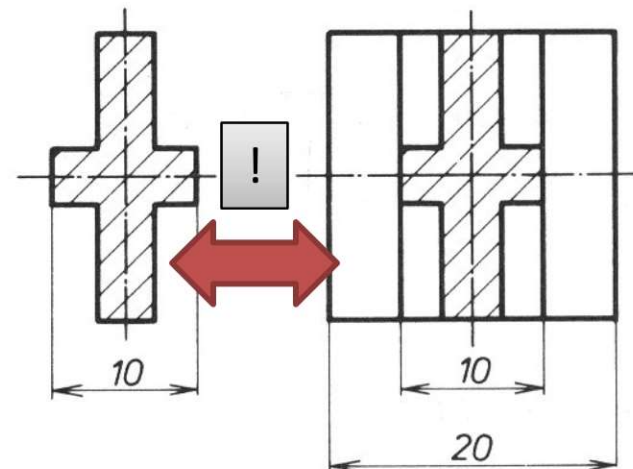
15.5 Secties – plaatselijke doorsneden

- 3 manieren
 1. Naast zicht
 2. Buiten zicht (verschoven)
 3. Gekantelde doorsnede

V.A.

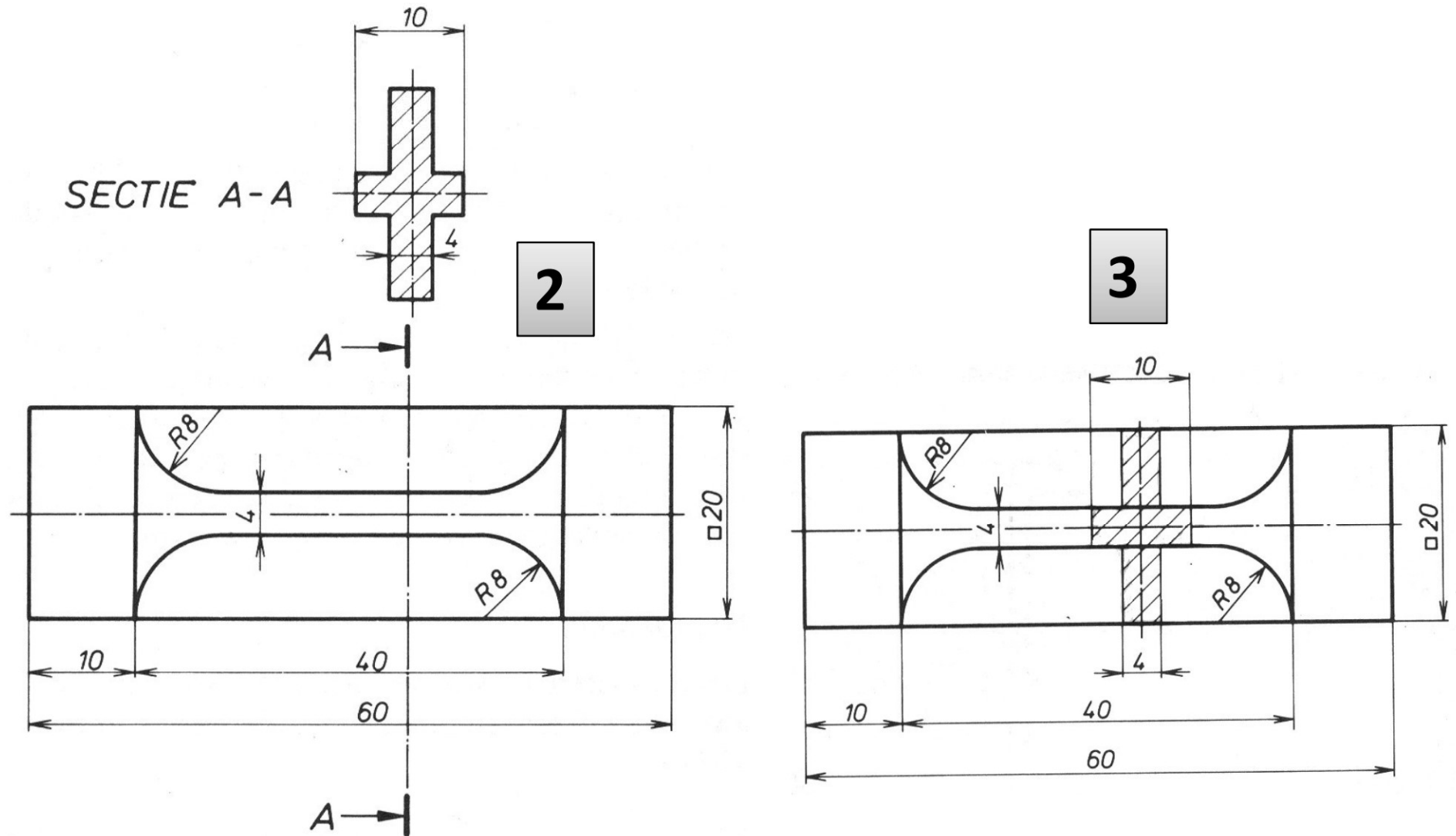


SECTIE A-A ↔ DOORSNEDE A-A

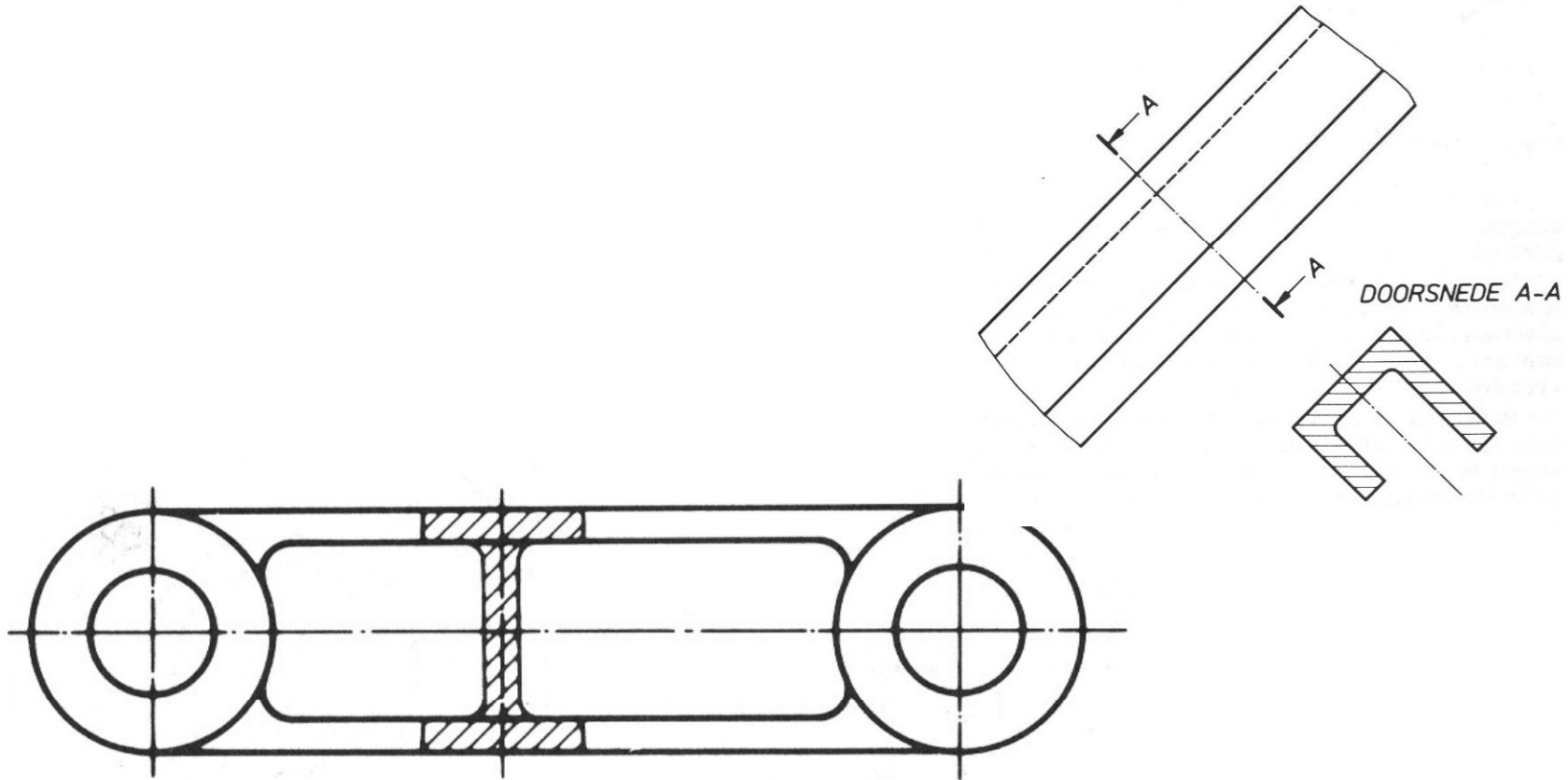


1

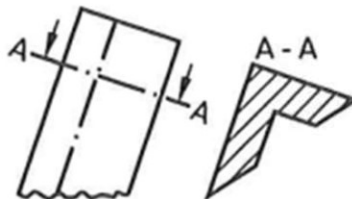
15.5 Secties – plaatselijke doorsneden



15.6 Gekantelde doorsneden, secties

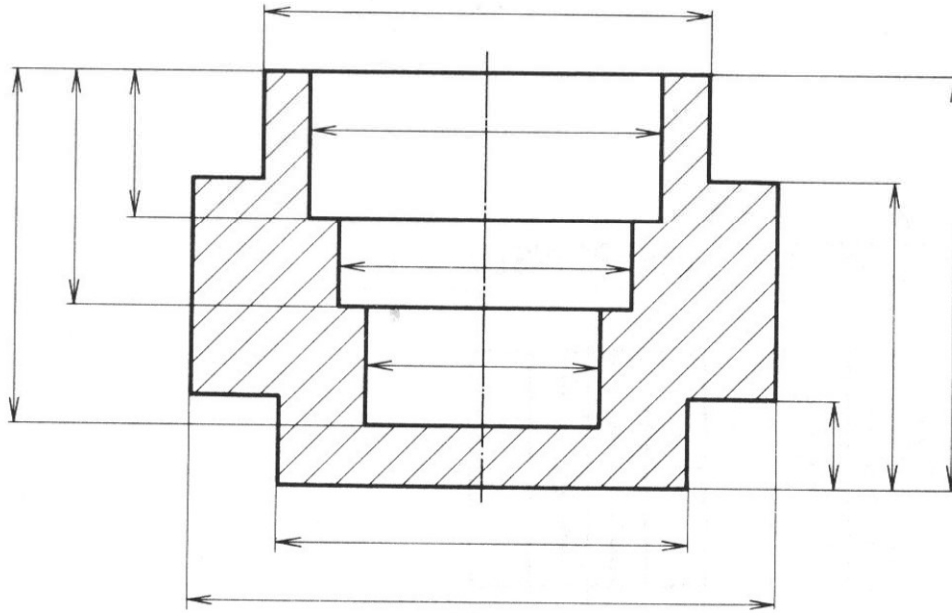


- Bij een naar buiten gebrachte snede wordt het verlengde van het snijvlak als scharnier gebruikt voor het neerslaan.

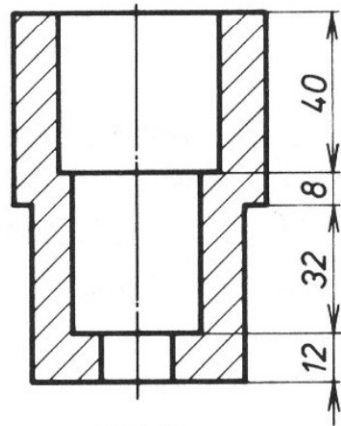


Opgepast met
projectie! Foutief
in Tabellenboek

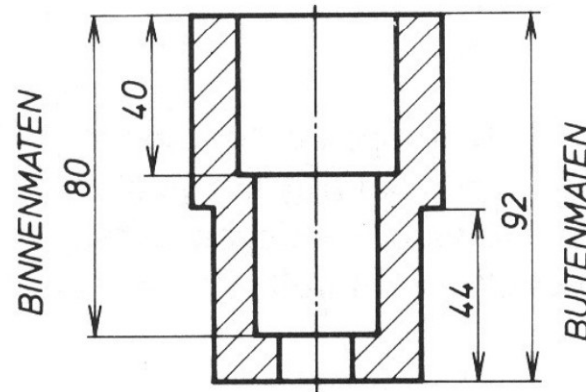
15.7 Bemating in doorsneden



Inwendig links – uitwending rechts



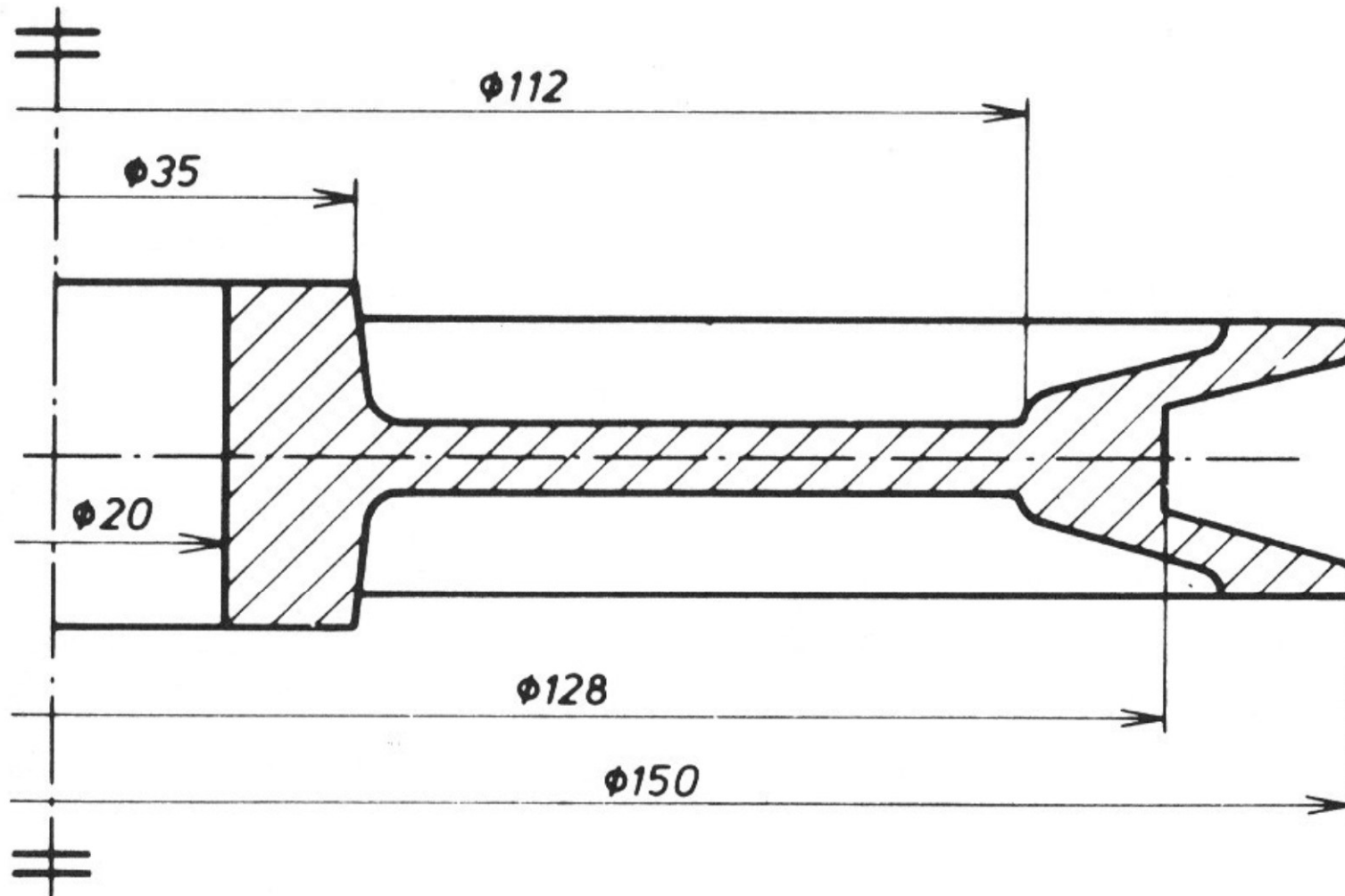
FOUT



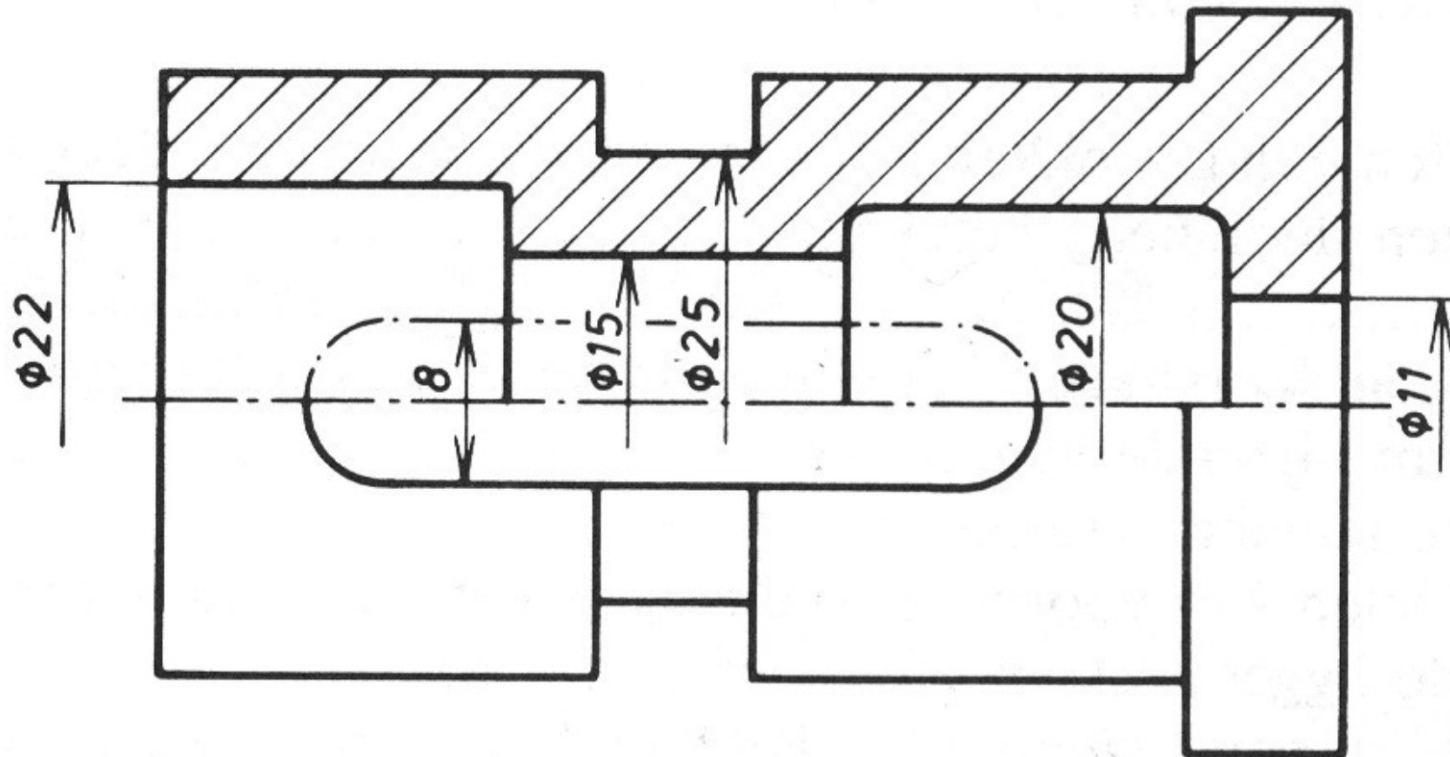
GOED

15.7 Bemating in doorsneden

Inwendig links/boven – uitwending rechts/onder



15.7 Bemating in doorsneden



15.7 Bemating in doorsneden

- Teken de sectie A-A

