
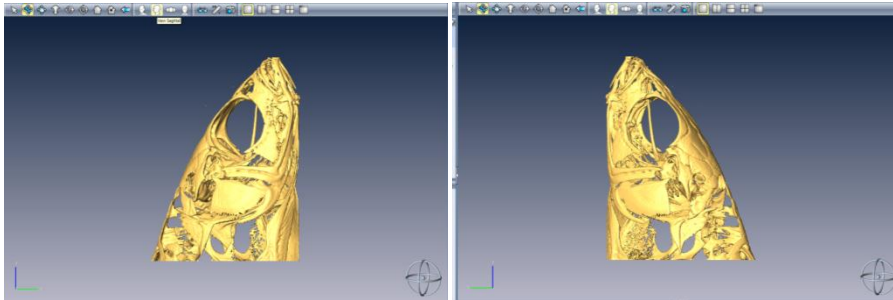



Miscellaneous tools in Amira 5

To see the other side in orthogonal views

To change the side in one of the three orthogonal views (), press the shift key when clicking on one of these view buttons (left screen without shift key, right screen with shift key).



Putting on particular structure in the centre of the viewer

To put a particular structure in the centre of the viewer, with the surface parallel with the viewer plane, use the seek tool () or by clicking 's'. Then click on that particular structure. From that point on, the selected point also becomes the centre of rotation of the surface model.

Remove orange frame around modules

Some modules will show an orange frame around it, such as in OrthoSlice, ObliqueSlice or SurfaceCut. To remove that frame, type the following in the console: "modulename frame {0}". So for SurfaceCut that would be SurfaceCut frame {0}. To add the frame again, type {1} instead.

Version 17/08/2011

Prof. Dr. Dominique Adriaens

Ghent University

Evolutionary Morphology of Vertebrates & Zoology Museum

K.L. Ledeganckstraat 35, B-9000 Gent

BELGIUM

tel: +32 9 264.52.19, fax: +32 9 264.53.44

E-mail: dominique.adriaens@UGent.be

URL: <http://www.fun-morph.ugent.be/>

<http://www.zoologymuseum.ugent.be/>



